

QUINEBAUG VALLEY ENGINEERS



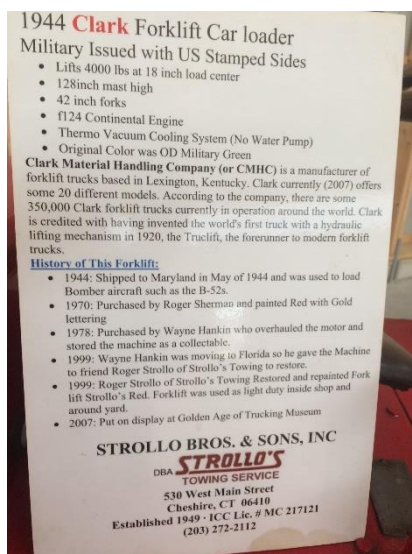
The Zagray Quarterly

11 June 2019

PRESIDENT'S NOTES – George Lehr

Our May show was quite successful, despite it being only a one day (Saturday) show due to the constant rain on Sunday. The show field and parking areas developed a lot of ruts, but they're finally drying out. The new tractor building was not yet ready inside for public admission, but should be adequately complete for the July show.

We got some nice donations, including a 1944 vintage Clark fork lift and a much newer Grizzly lathe complete with lots of tooling. The fork lift will look great and because of its small size, will be very useful in the new tractor building. The lathe with tooling is a very welcome addition to our repair facilities. Meanwhile, with Mike Miner's effort, we sold a welder that was only taking up space at the farm. Hope we can do more of that.



Connor and Ethan have solved the perplexing problem with the Atlas Imperial hand priming pump and I'm confident they'll have it running for the July show; hope to see you all there.

FROM THE DESK OF THE TREASURER – Art Chester

It's that time of year again. 2019 dues are still \$20. If you are mailing it, make your check payable to QVEA, and mail it to 180 South Plumb Road, Middletown, CT 06457. There's no need to fill out a new membership form, but if you have changes to your address, phone number or email, please include the changes. A stamped, self-addressed envelope is also welcome. Any and all donations beyond the dues are tax deductible and very much needed and appreciated!

If you have an email address, please email Dianne Tewksbury at dktewks@gmail.com to change from snail mail! That will save our printing-sorting-folding-mailing crew some labor, and save your club a **lot** of money, as well as being environmentally 'green'.

For those of you who contribute to the United Way campaign, QVEA is now listed as a charitable organization allowing you to direct your donation to us for the support and expansion of the Zagray Farm Museum. The Pfizer Foundation also has a volunteer program that provides QVEA with substantial donations each year, based on the volunteer work of members who work or are retired from Pfizer.

We are set-up with Amazon Smile as well. This program donates 1/2 of 1 percent of eligible purchases to a charity of your choice. The pricing is the same on Amazon Smile as on Amazon. Paste or type this link <https://smile.amazon.com/ch/06-1426891> into your browser to connect to QVEA's page and get started!

Tractor Building

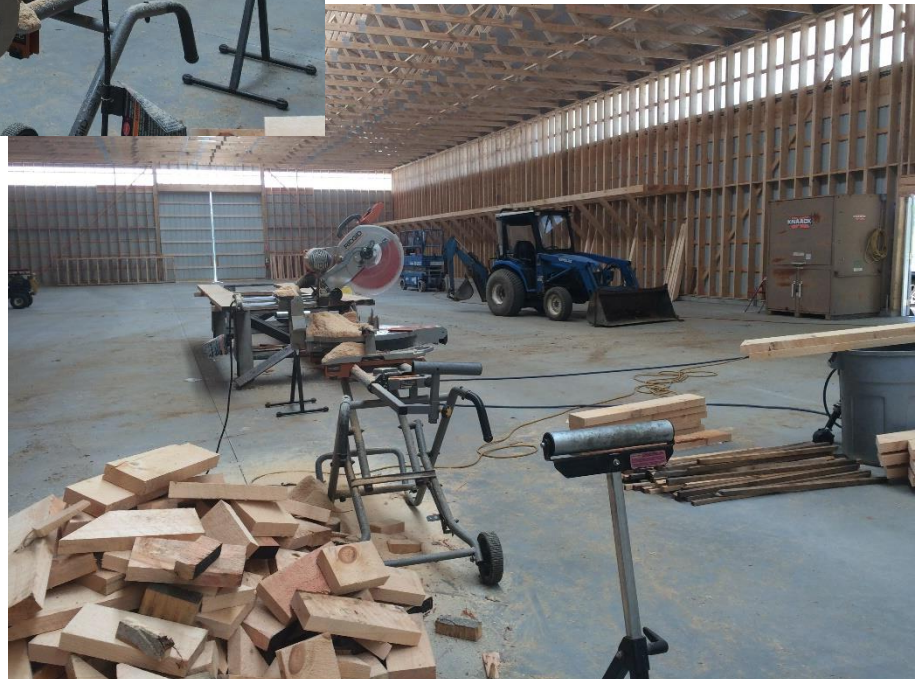
We prepped and poured the floor inside the Tractor Barn around the middle of April. 180 yards of concrete were brought in for the job, which came out great! Work has progressed on the mezzanine and as of me writing this its more than 50% completed. I have installed the forms to pour the rear shed area. It needs some final grading and compacting. Looking great!



This picture was taken a few weeks ago. At printing time for this newsletter, it is about $\frac{3}{4}$ completed.



The inside of the building looks like a construction site.



But, the outside is actually starting to look like a real Tractor Building!





Almost done!!

Saw Mill

All the material was cut for the 480 running feet of 4' mezzanine and moved to the Tractor building. We also cut about 40 more 2X12 rafters for the next engine building. Still a lot more cutting as time permits, but I think we'll have everything cut by fall for a spring 2020 build.

Still wanted – Logs for the saw mill. Even though we received a substantial number of logs, we are still on the lookout for more. 16'6" pine logs in particular that are 20 inch diameter or more on the small end will make good rafters. 12'6" logs of similar size will be used for 2X4's and siding. We have a good supply, but having extra material in stock would be nice. Power has been installed to the woodworking building and the tractor repair shed.

Pavilion Building

We have Chatham Health Department approval for our septic plan and bathroom facilities, and Zoning approval to place the building. No funding is available for either the septic or the bathrooms at this time. We have a building permit for the pavilion as well as an electrical permit, less the actual kitchen. We will deal with that as a future project.

Pond Excavation

Waiting (im)patiently for lower water levels!

The Bob Chester Engine Building

We had planned to erect a second engine building about 40 feet west of the current building. My dad and his wife have been tremendous supporters financially over the years while we struggled with our co-tenant and the landlord over use of the property. In his memory, the family will provide funding for the building, primarily materials we cannot produce on site. This moves the project up the timetable and puts more pressure on our sawmill crew to produce the beams needed. The building will house small flywheel engines as well as dad's two put-put tractors and other items. A complete wrap around porch is planned for this building (so I don't have to add it later!). I am excited to get started!

STATIONARY ENGINE BUILDING

Connor Bishop & Ethan Bailey

During the Spring Show weekend, Mike and Ethan put the head back on the Atlas Imperial engine after repairing the valve guide that was causing the air start valve to hang up. With that complete, Ethan and I re-adjusted the air start, intake, and exhaust valves to verify their adjustment. With that complete, we decided to see if it would crank over on air, which it did! Next up is troubleshooting the fuel system so it can build pressure, which will then allow us to adjust the injector pushrods. We also rigged up an oil pump to pre-lubricate the bearings and oil passages before a test run or more cranking on air.

I plumbed in a water circulation pump in the Fairbanks cooling system to attempt to get longer, cooler runs during the shows. Even though there was no radiator or heat exchanger, the engine never got above 120 degrees or so. This helps direct us in figuring out how much cooling capacity we need in our permanent cooling system, and given these results, we will likely have a very simple cooling system without the heat exchangers and water pumps that we were initially planning.

The Bessemer FC oilfield engine that I brought to the farm recently is in near-running condition. There was a broken valve guide on it, so I removed the governor valve and intake valve chest, repaired the guide, and it is waiting on a new custom copper washer gasket to go back together. Then it needs some gas, air, and water plumbing, and hopefully it will be running for the Summer Show.

The Ruston Hornsby has the side shaft and governor box removed finally, after making some special pullers to pull off cams and the governor gear. The governor box has some very rusted moving parts, so it is currently sitting in a bucket of diesel in an attempt to loosen it up.

Nate spent some time working on our cherry picker installing a start/stop key switch in the basket, since it lacked one in that spot. Also note that turning the key backwards one click from its "off" position actuates the fuel prime function. The machine still has a ghost that will occasionally cause various hydraulic functions to operate on their own, but having a kill switch in the basket will increase the safe operation of the machine.

Nate and I spent a day re-installing the steering clutch back into the HD-5, and for reasons still unknown it will not steer on that side. More time will need to be dedicated to the machine, but for the time being it was driven out of the engine building and parked to be worked on later.

Recently, the Euclid dump truck had a failure that was luckily caught before further damage occurred. The lift cylinder for the body rides in a cradle that pivots on large 3" diameter pins that mount in frame crossmembers. The rear crossmember had finally given up and broke in two, releasing the pin that retained the cylinder cradle. We hoisted up the body with the Northwest crane, removed the cylinder, and cut out the old crossmember to use as a pattern for a new one. Hopefully it will be back in action soon, possibly with new injectors in the engine to reduce the excessive smoke that it makes.

This year will be like many others – plenty of jobs to do, and there are jobs for every age and skill set or level. Stop by the farm and see how you can help out!



Since the rains that practically ruined our May show, we're having a beautiful summer so far this year!

The next two shows are:

JULY 20 & 21

OCTOBER 5 & 6

Visit our Website: zagrayfarmmuseum.org

Dianne Tewksbury
QVEA Secretary & Editor
90 Park Road
Colchester, CT 06415

APPLICATION FOR MEMBERSHIP

QUINEBAUG VALLEY ENGINEERS ASSOCIATION, INC. (QVEA)



NAME _____

STREET _____

CITY _____

STATE/ZIP _____

PHONE _____

E-MAIL _____

Dues are \$20.00 per person for one year, payable with application.
Dues include liability insurance at the farm.

RETURN TO: QVEA, 180 SOUTH PLUMB RD, MIDDLETOWN, CT 06457