

QUINEBAUG VALLEY ENGINEERS



The Zagray Quarterly

June 2021

FROM THE DESK OF THE TREASURER – ART CHESTER

Dues for 2021 are due and still \$20.00 per year.

Lifetime memberships are \$500 and help the museum grow!

Contributions to help pay for the Ray DeZara engine collection are needed to pay the second annual installment of \$35,125, due April, 2022. Please note on your donation that it is for this purpose.

Our May show was awesome! Gross proceeds were \$23,800, far exceeding any previous show. Excellent weather and the pent up needs of all of us to get out and do all of the things not possible for the past year certainly helped. I believe all of our grounds improvements and additions to our displays also plays a part in our continued growth.

Thanks to all who make our shows happen!

For those of you who contribute to the United Way campaign, QVEA is now listed as a charitable organization allowing you to direct your donation to us for the support and expansion of the Zagray Farm Museum. The Pfizer Foundation also has a volunteer program that provides QVEA with substantial donations each year, based on the volunteer work of members who work or are retired from Pfizer.

We are set-up with Amazon Smile as well. This program donates ½ of 1 percent of eligible purchases to a charity of your choice. The pricing is the same on Amazon Smile as on Amazon. Paste or type this link <https://smile.amazon.com/ch/06-1426891> into your browser to connect to QVEA's page and get started!

Saw Mill

I was introduced to Kevin Jordan, of Jordan sawmills in Sterling and he has graciously donated two loads of really nice pine from his yard. I will pick up the second load this week. We still need 12 foot and 16 foot material any way we can get it.

LOST! We had two log tongs with chains for lifting logs off trailers. I vaguely recall someone borrowing them a year or more ago. We don't use them as much now that the skid steer has a grapple bucket, but we really would like them back for those times when the skid steer is unavailable. Hopefully, this will stir a memory in someone!

We have about 60 of the 2"X12"X16' rafters needed for the 2nd engine building but 80 more need to be cut. All of the posts have been cut as well.

So, our emphasis remains on producing the necessary materials for the second engine building. We can now store lumber under the rear shed roof of the new tractor building, giving us more room under the mill.

SAW LOGS NEEDED BADLY!

Pavilion Building

The septic system should be complete as of 6/10 as its $\frac{3}{4}$ done now. **A huge thank you to Sean for his excavator and assisting Mark of Snow's Septic with the installation.**

The site will be all cleaned up for the July show. Unfortunately, my skid steer was needed in Kent to haul engines out of the buildings and was not available to help. Water is to the building as well. We needed to cut the concrete to raise the septic discharge pipe as well as adjust the center island electrical. That is all completed. Electrical inspection is slated for 6/8, after which we can sheetrock and FRP board the interior. Cabinets, sinks, stove, and other items have been ordered or on site. There is still a lot to do, but we are aiming for a July show opening! Fingers crossed!



Well and Well House

Water has been completed, with service to the pavilion, two RV posts, the engine building, and the newly moved gas shed near the memorial flagpole (used to be the sawmill shed). We also extended it to near where the next engine building will be located. There is a faucet marked with a cone out behind the engine building, watch out for it! The interior of the well house has been insulated, rocked, painted, and cabinets installed to use the space as a "break room" for the workers. This moves the refrigerator and cabinetry out of the engine building. A second refrigerator will move from the rear of the food trailer to give us extra space during shows.

Engine Collection Purchase

We have moved a good portion of these engines from Kent and have them in the tractor building on static display pending construction of the next engine building. We've had a great crew of volunteers, trucks and trailers, making the project simple. There is still more to get but I think we might be complete by end of June.

The addition of this collection and the Bob Chester Memorial Engine Building will easily make us the largest engine display in New England! Quite an accomplishment!

STATIONARY ENGINES -- CONNOR BISHOP/ETHAN BAILEY

What a great Spring show we had! The Engine Building was busy, as it was everywhere else on the Farm. We had plenty of displays going, some newly set up. Crowd favorites seemed to be the flat belt-driven demonstration set ups we had, so we'll be working on putting together more - some powered by the Atlas Imperial! Our one engine building is getting crowded, so it will be a great addition once we break ground for the second building and make more space. We're going to need it – at the time of writing, about two thirds of the Ray DeZara engine collection from Kent has been hauled to the farm and is currently in storage in the Tractor Barn. The remainder of the collection will likely be hauled before the Summer Show, and I'm sure plenty of our spectators will be surprised to see this well-known collection in a new home. The engines will be set up and plumbed as they were in Kent, and I'm looking forward to seeing the progress! It will be a handful to set these engines up and run them all for the show, so anyone interested in stationary engines is encouraged to help out.

We have plenty to do - construction of the second engine building, dragging and moving engines into place, and LOTS of plumbing. Of course, there's plenty of other projects, something for everyone! Stop by on a weekend and see what's going on. Our next show is coming up soon, and I'm sure it will be another great show. See you at the Farm!

FROM DAVE CHESTER

FREE FIREWOOD!



The farm is overrun with excess hardwood, Oak, Maple, Hickory, etc. Most of this wood was slated for the sawmill and is just simply not required. All this wood is still in log lengths 8' 10' etc. and will need to be cut up into firewood length. Bring a chainsaw! We can also load up entire logs onto your trailer if you would like. The pile is located on the left side of the rear loop in between some dead dozers. I will be actively adding to the pile as the weeks progress. Please contact Dave @ 860-982-5163 or Art @ 860-982-5158.

SMALL DONATIONS!

Thanks to all of you who donate items to the farm. We try and make good use of all items either for our use or good display items. Commonly items get dropped either inside or outside the Engine Building or Large Tractor Building. We would like to ask members to drop donated items in the Rear Repair Shop instead (this is the building out back by the 80D shovel). This way we can sort them and get them to their proper locations when we find time. We find ourselves overwhelmed before a show trying to sort through these items and get the buildings presentable for the shows. Thanks Again.

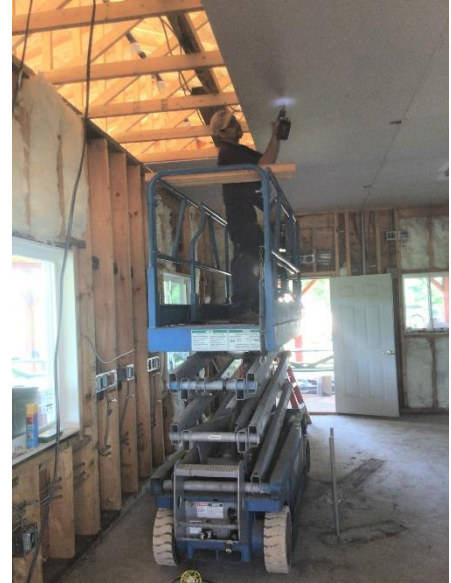
FROM THE SECRETARY – Dianne Tewksbury

Early this spring, Ned decided that most of the picnic tables at the farm needed repair and painting. I offered to paint if he did the sanding. That's been our project for the past several weeks.

The "open-wall electrical" inspection in the kitchen was completed last week and we passed. Thank you Dave and Allen!!

Now the wallboard can go up and Dave got that started last Friday by putting all the rest of the wallboard up on the ceiling.

This past weekend was a flurry of activity. On Sunday, several volunteers were at Kent preparing the latest load of engines to be moved to Zagray farm. Other members had arrived at the farm to help unload the engines. While waiting for them to arrive, two of our newest members, Aleks and Chris pitched right in to help Rick Clewell do some work inside the kitchen. I personally want to say "Thank You to all three of you!" (*Sorry guys – those two pics were blurry.*)



The septic system inspection was completed this past Monday and it passed.

Ned and I met with Mike Caruso of Custom Flooring yesterday and have determined what type of flooring is needed for the kitchen. As long as Chatham Health approves, Mike will get the material ordered and installed. Hopefully, this can be done in time for us to install the three sinks, refrigerator, grill/oven, etc. and have it ready for the July 17 show. As Art said: Fingers crossed!



Ned offered to give Mike a tour of the Tractor Barn and I got my first look at the big engines from Kent. Mike was so impressed with the whole place, specifically with the Tractor Barn and those huge engines. Now I know why the guys were so excited to get those engines. They are incredible and will draw a lot of audience.





Dianne Tewksbury
QVEA Secretary & Editor
90 Park Road
Colchester, CT 06415

APPLICATION FOR MEMBERSHIP

QUINEBAUG VALLEY ENGINEERS ASSOCIATION, INC. (QVEA)



NAME _____

STREET _____

CITY _____

STATE/ZIP _____

PHONE _____

E-MAIL _____

Dues are \$20.00 per person for one year, payable with application.
Dues include liability insurance at the farm.

RETURN TO: QVEA, 180 SOUTH PLUMB RD, MIDDLETOWN, CT 06457